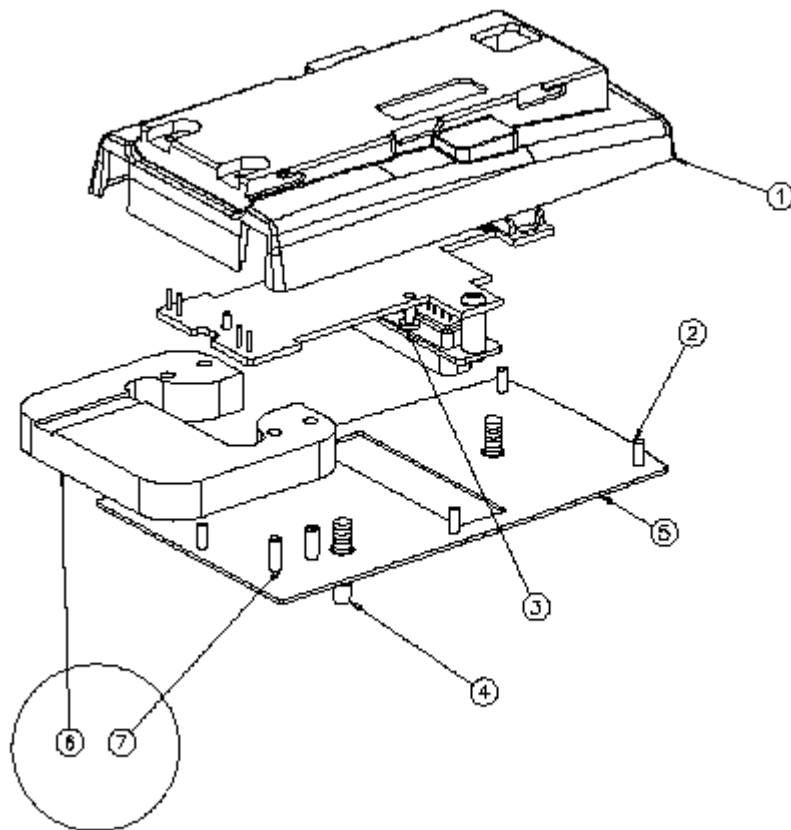


**Exploded view**



Item	Description
1	MJF-9 upper cover
2	MJF-9 screws for MJF-9 assembly
3	MJF-9 PWB
4	MJF-9 fixation to JBV-1
5	MJF-9 lower cover
6	HCA-1
7	HCA-1 screws for fixing to MJF-9



RF: XRC-1B (0730128)



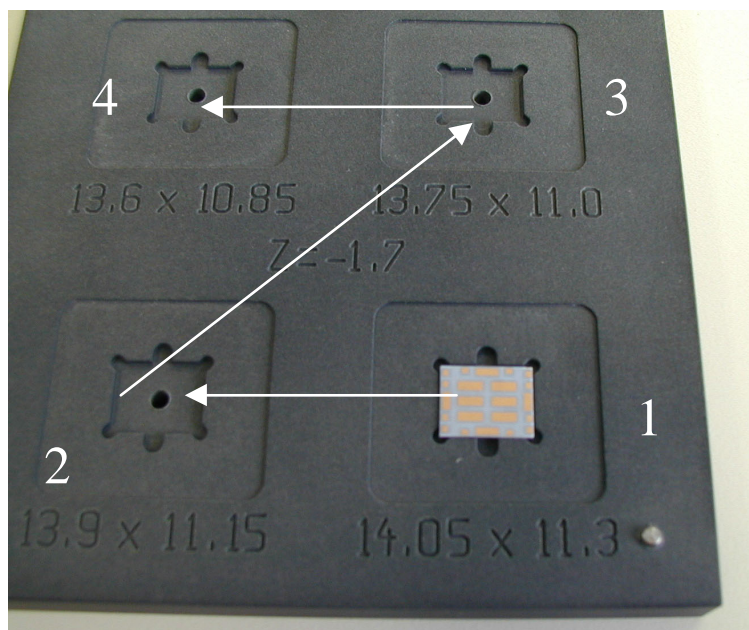
## LRK-2 / 3 LGA component rework kits 1 & 2

Type designator	Description	Part code
LRK-2 (0273645) Kit 1		
MJS-76	LGA Re-work Jig	0770417
SES-2	Stencil	0770415
SPS-2	Spreader	0770471
LRK-3 (0273646) Kit 2		
SES-2	Stencil	0770415
SPS-2	Spreader	0770471

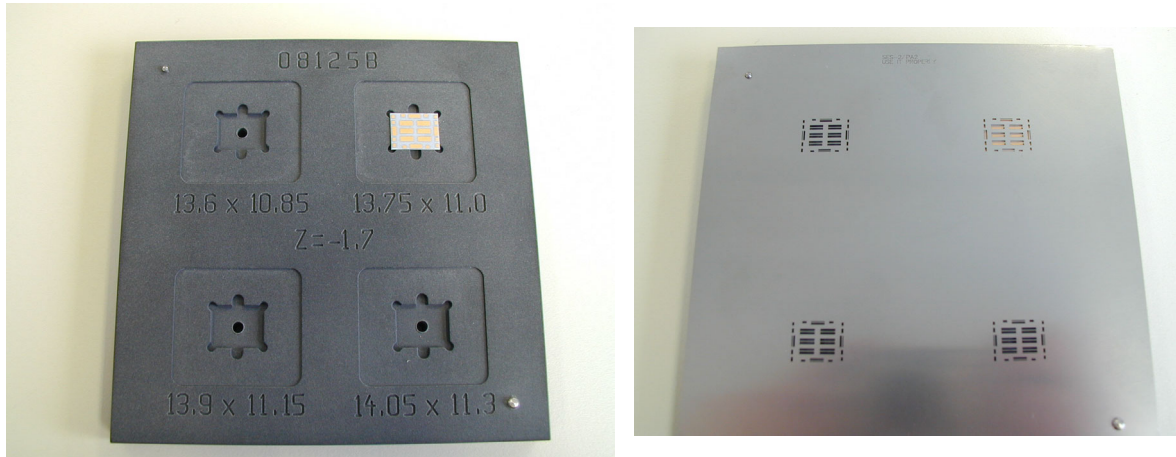
### Rework procedure

Due to the large mechanical tolerance of the power amplifiers the following procedure is necessary:

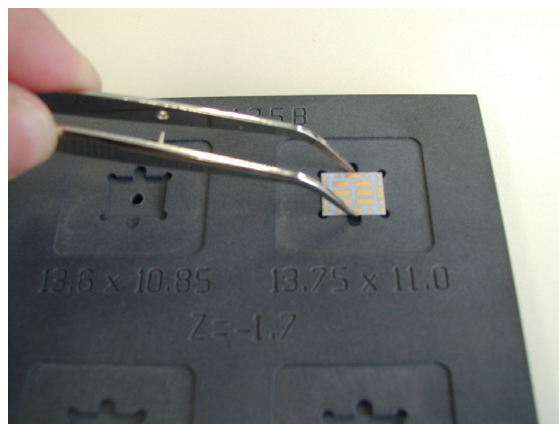
- 1 Put power amplifier into the MJS-76 re-work jig, the PA should be placed in the best fit location, this is determined by firstly placing it in the largest location if this is to large re-position the pa in the next size location, this should be carried out until the best fit location is found.



- 2 Once the best fit location has been found, leave the PA there and put stencil on top of the jig and PA.



- 3 Put soldering paste on the PA properly.
- 4 Remove stencil and the PA from the jig.



- 5 Start soldering process.

## MJS-76 PA LGA re-work jig (Product code 0770417)

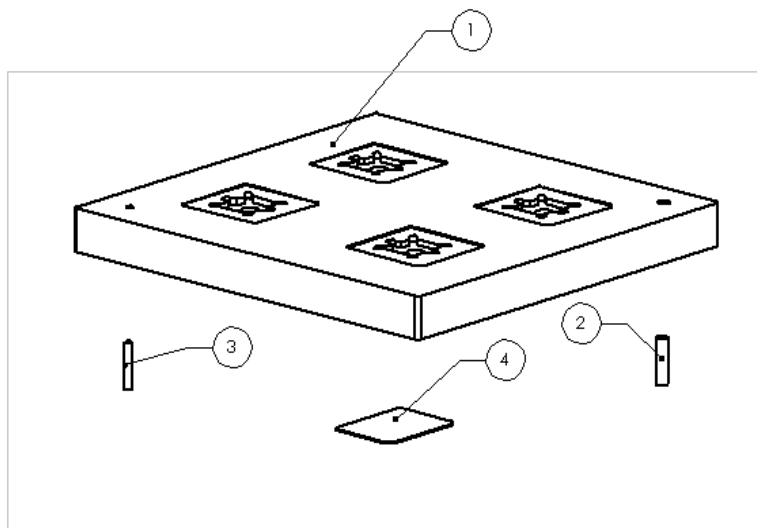
### Introduction

This tool is used in LGA type component reworking purposes in central service centers,

### Part list

Part number	Name of Part	Material code	Drawing number	Qty
1	Frame		SME5S910	1
2	Cylindrical pin 3x12	640b003		1
3	Cylindrical pin 2x12	640B012		1
4	Type label	9380601		1

### Exploded view



**This page intentionally left blank.**